



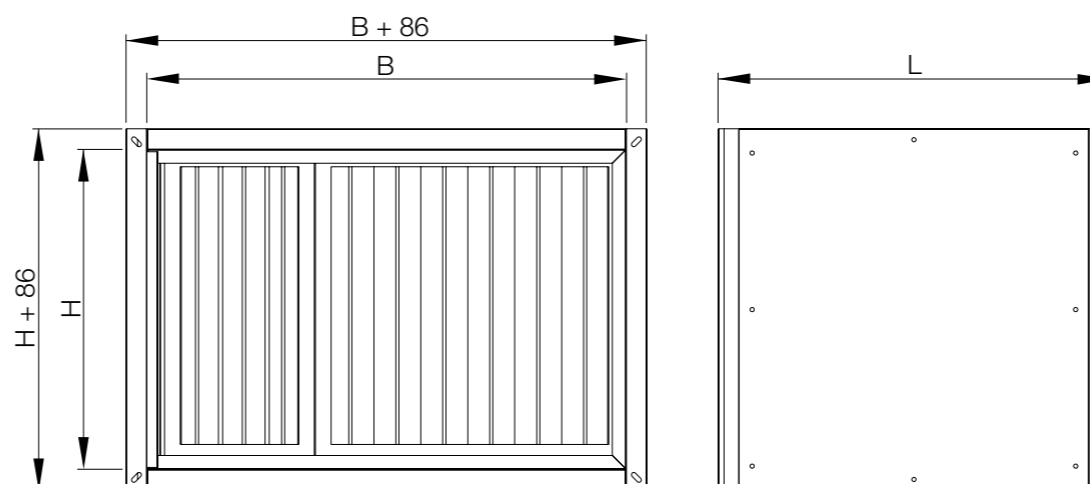
Product catalog

FKV-P, FKV-C

Duct filter unit- Absolute

Air filtration

Version 1.0.0
Date: 20.01.2025.



FKV-P

Filter casing with replaceable bag filters type :

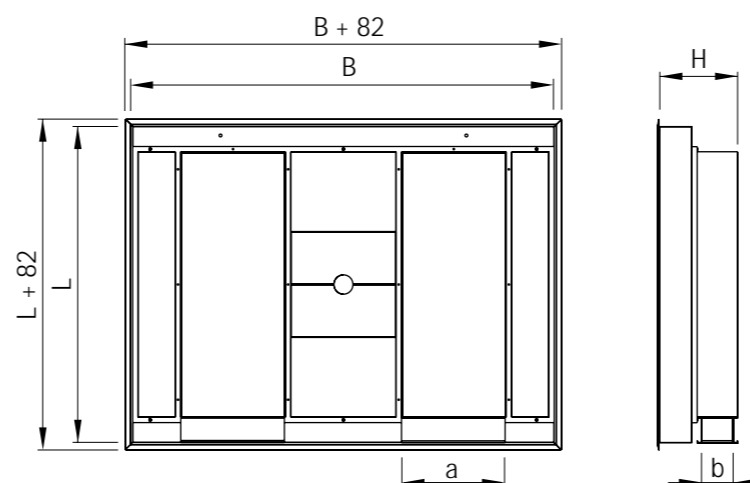
- G4, M5, F7 or F9 for filtration in systems of ventilation and air conditioning
- Casing is made from galvanized steel sheet
- Its intended for the installation between two rectangular channels.
Filters must be ordered separately!

- [Riveted plenum boxes](#)
- [Welded plenum boxes](#)
- [Filters](#)
- [Diffusers](#)
- [Ordering key](#)
- [Installation](#)
- [Diagrams](#)



DIMENSIONS

Casing dimension B x L x H (mm)	BAG filter dimensions	Δp nom (G4)	Δp nom (M5)	Δp nom (F7)	Δp nom (F9)
300 x 150 x 750	285 x 142 x 630	50	55	65	70
400 x 200 x 750	385 x 192 x 630	62	72	80	95
500 x 250 x 750	485 x 242 x 630	65	75	85	102
500 x 300 x 750	485 x 292 x 630	68	80	96	104
600 x 300 x 750	585 x 292 x 630	73	85	100	105
600 x 350 x 750	585 x 342 x 630	78	92	106	137
700 x 400 x 750	685 x 392 x 630	85	105	121	156
800 x 500 x 750	785 x 492 x 630	112	120	160	195
1000 x 500 x 750	492 x 492 x 630 (x2)	142	161	208	267



- ▼ [Riveted plenum boxes](#)
- ▼ [Welded plenum boxes](#)
- ▼ [Filters](#)
- ▼ [Diffusers](#)
- ▼ [Ordering key](#)
- ▼ [Installation](#)
- ▼ [Diagrams](#)

FKV-C

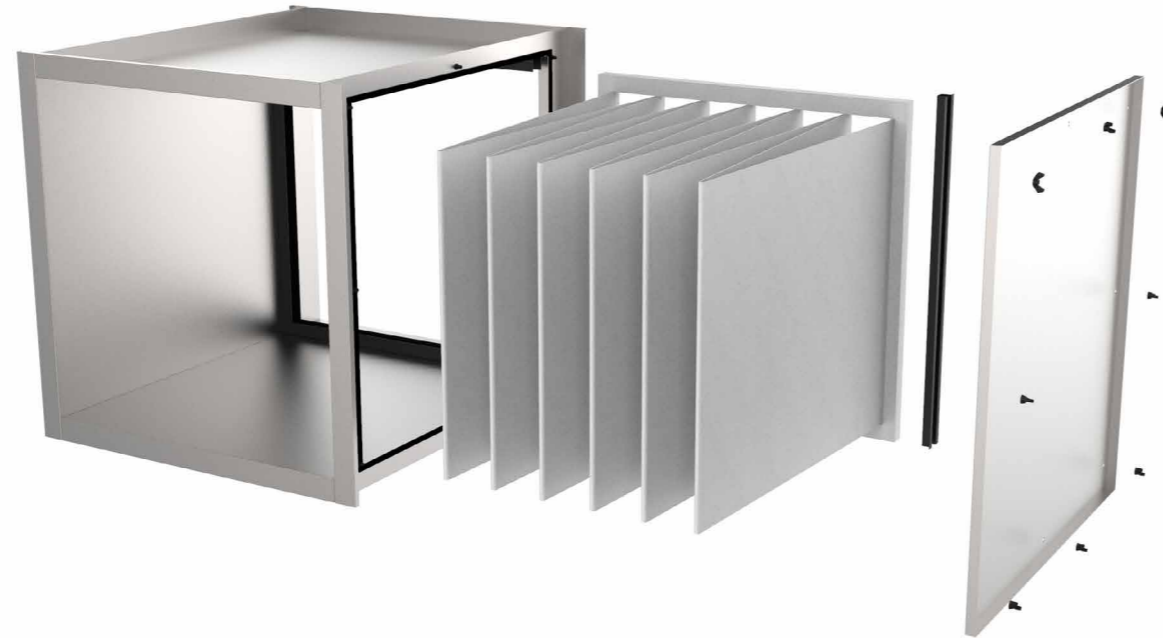
Filter casing with replaceable bag filters type :

- G4, M5, F7 or F9 for filtration in systems of ventilation and air conditioning
- Casing is made from galvanized steel sheet
- Its intended for the installation between two rectangular channels.
Filters must be ordered separately!



DIMENSIONS

Casing dimension D (mm)	BAG filter dimensions
Ø 125	214 x 190 x 260
Ø 315	423 x 372 x 360
Ø 500	612 x 580 x 360



- ▼ [Riveted plenum boxes](#)
- ▼ [Welded plenum boxes](#)
- ▼ [Filters](#)
- ▼ [Diffusers](#)
- ▼ [Ordering key](#)
- ▼ [Installation](#)
- ▼ [Diagrams](#)

Filters

They can be of type LF11, LF14 or LF15 range. Note that all the filters in our range are standardized sizes with the aim of simplifying replacement operations and in order not to have a single manufacturer.



FILTERS

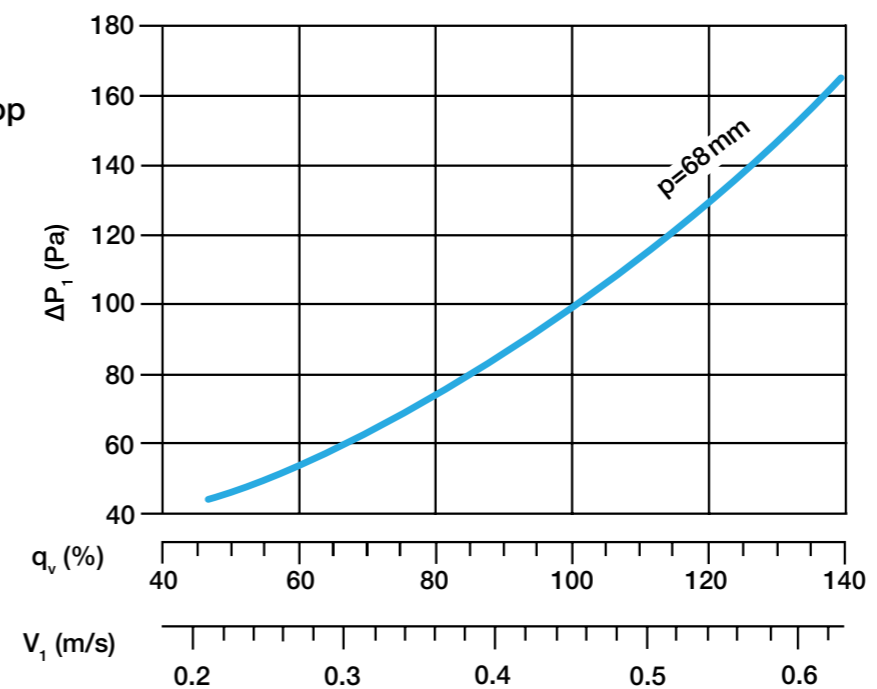
LF11, LF13, LF14 and LF15, thickness 68 mm

They consist of a frame in anodized aluminum profile 68 mm thick receiving the filter media (micro-fiber glass paper in mini-ply). A white lacquered metal grid protects the media on both sides during handling. The filters have been tested in accordance with EN 1822 and are effective, as desired:

- H11 (≥ 95% MPPS)
- H14 (≥ 99.995)
- H15 (≥ 99.9995% MPPS)

Each filter, delivered in individual plastic packaging, in a rigid cardboard box, is supplied with its individual test certificate according to EN 1822 (MPPS 100% scanning) which must be given to the future user. A polyurethane gasket (continuously cast on the aluminum frame) ensures tightness during the mechanical tightening of the filter on the underside of the self-supporting frame.

LF14- initial pressure drop





- [▼ Riveted plenum boxes](#)
- [▼ Welded plenum boxes](#)
- [▼ Filters](#)
- [▼ Diffusers](#)
- [▼ Ordering key](#)
- [▼ Installation](#)
- [▼ Diagrams](#)



ORDERING KEY FOR FKV

(1) Duct filter unit	(2) Dimension	(3) Finish
FKV-P	- 300 x 150 x 750	- /
(1) Ceiling filter unit: FKV-P FKV-C	(2) Dimensions FKV-P: 300 x 150 x 750 400 x 200 x 750 500 x 250 x 750 500 x 300 x 750 600 x 300 x 750 600 x 350 x 750 700 x 400 x 750 800 x 500 x 750 1000 x 500 x 750 Dimensions FKV-C: Ø 125 Ø 315 Ø 500	(3) Optional RAL

ORDERING KEY FOR FILTER

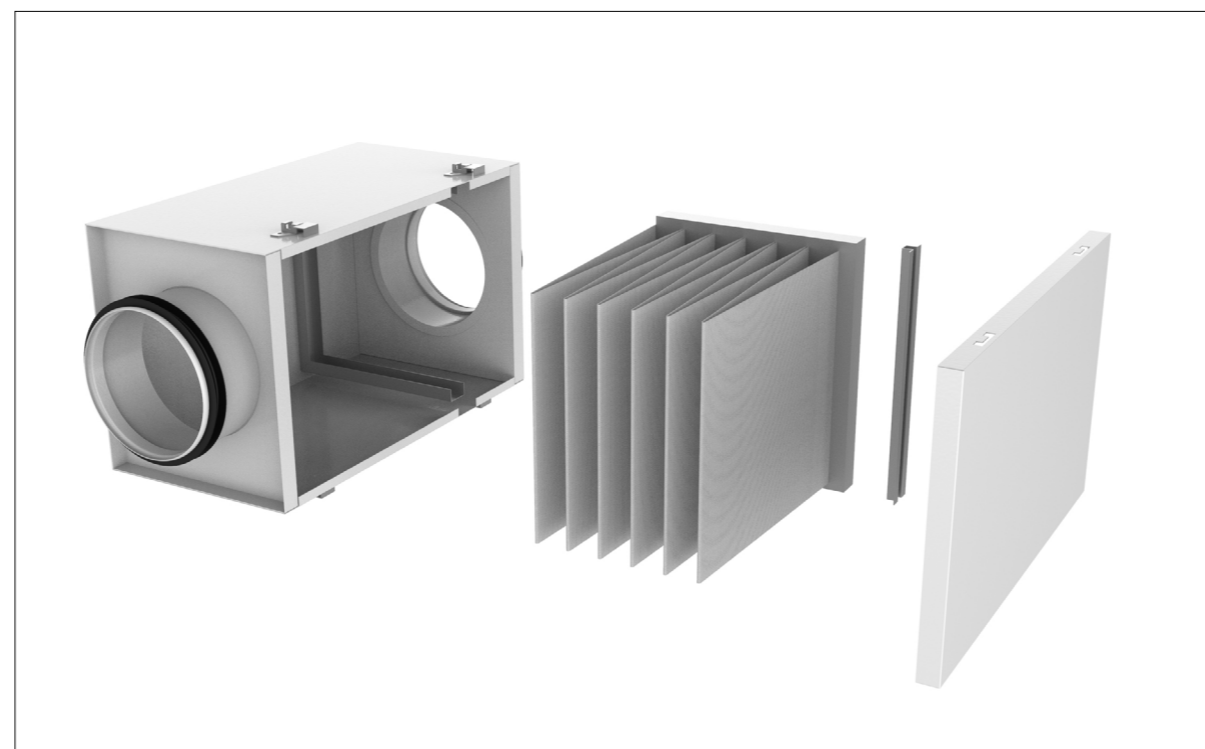
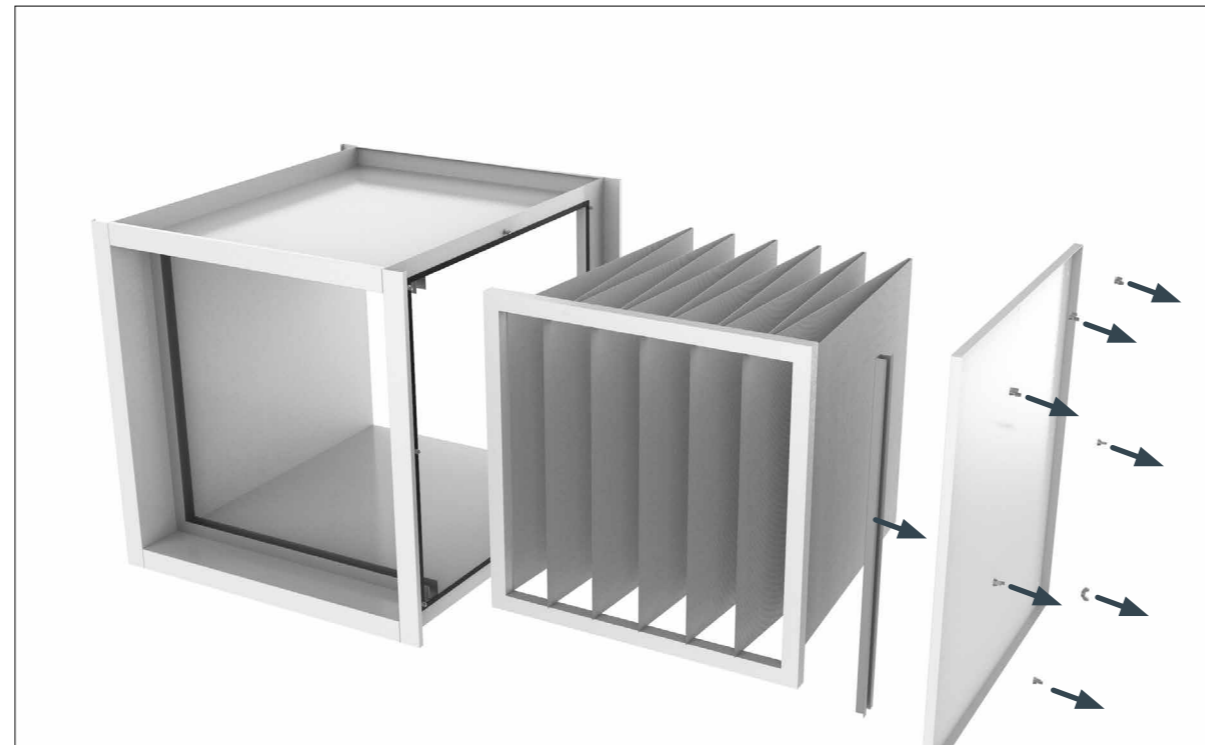
(1) HEPA filter type	(2) Dimensions
LF14	- 485 x 242 x 630
(1) Hepa filter type: H14	(2) Filter dimensions FKV-P: Filter dimensions FKV-C: 285 x 142 x 630 214 x 190 x 260 385 x 192 x 630 423 x 372 x 360 485 x 242 x 630 612 x 580 x 360 485 x 292 x 630 585 x 292 x 630 585 x 342 x 630 685 x 392 x 630 785 x 492 x 630 492 x 492 x 630 (x2)

Installation instructions

Filter change

1. Remove the screws/ buckles and side cover
2. Remove the spacer and slide the old filter out of the casing.
3. Insert new filter.
4. Re-install the spacer and side cover and screws.

NOTE: Prior the installation, supply air ducts has to be disabled and blown out. Air-tight dampers, if there are any, has to be closed also. As a final step of installation, each surface of operation ceiling must be wiped.



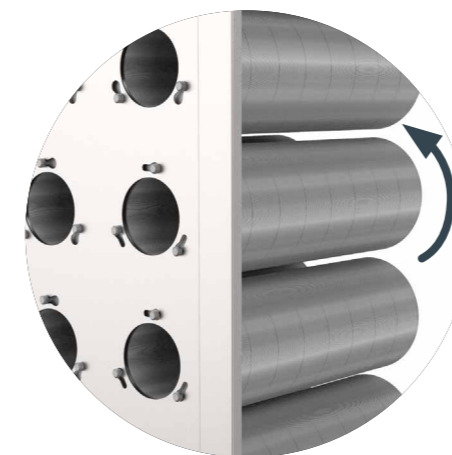
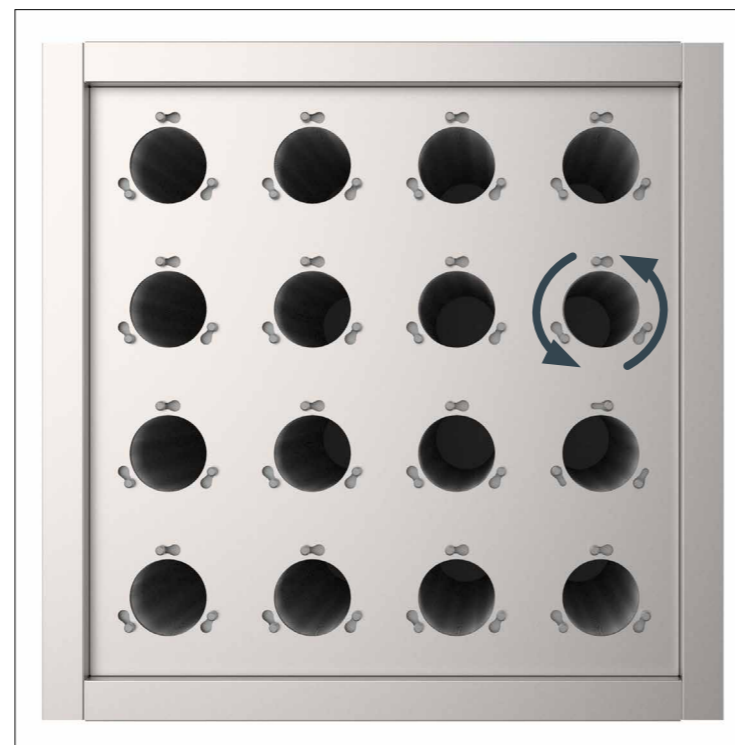
- ▼ Riveted plenum boxes
- ▼ Welded plenum boxes
- ▼ Filters
- ▼ Diffusers
- ▼ Ordering key
- ▼ Installation
- ▼ Diagrams

Installation instructions

FKV-C filter change

1. Remove the screws and side cover
2. Rotate each filter in clockwise direction and remove it from the casing.
3. Insert new filters in the mounts and rotate them in counter clockwise direction to tighten them.
4. Re-install the side cover and screws.

NOTE: Prior the installation, supply air ducts has to be disabled and blown out. Air-tight dampers, if there are any, has to be closed also. As a final step of installation, each surface of operation ceiling must be wiped.



- ▼ Riveted plenum boxes
- ▼ Welded plenum boxes
- ▼ Filters
- ▼ Diffusers
- ▼ Ordering key
- ▼ Installation
- ▼ Diagrams



AIR FILTRATION

Projektiranje, proizvodnja i održavanje opreme za klimatizaciju, ventilaciju i čiste prostore.
Design, production and service of Ventilation, Air-Conditioning and Cleanroom equipment.

-  Gradna 78A, 10430 Samobor, Croatia
-  +385 (0)1 33 62 513
-  info@klimaoprema.com
-  www.klimaoprema.com