



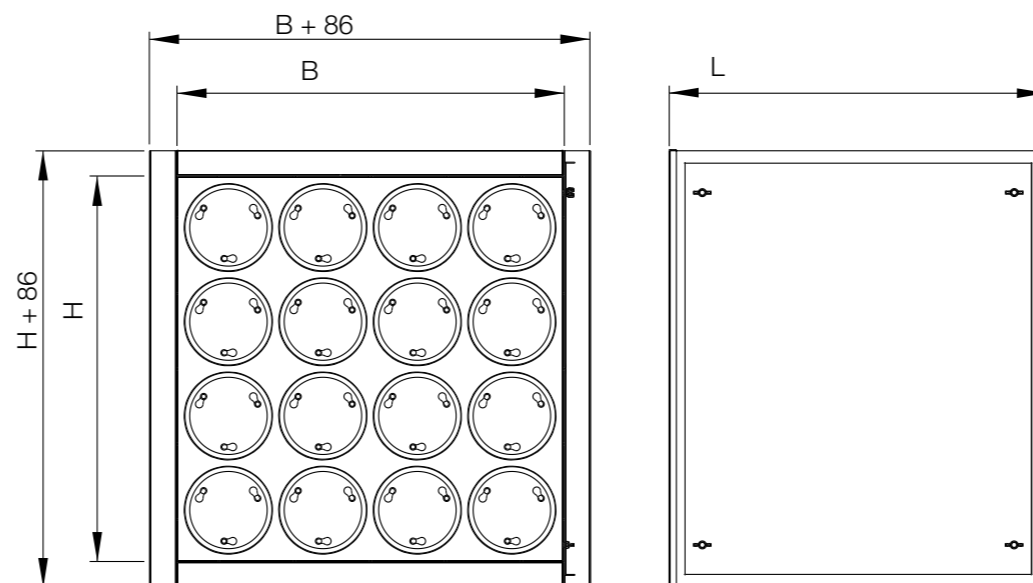
Product catalog

FKU

Duct filter unit with active coal

Air filtration

Version 1.0.0
Date: 20.01.2025.



- [Duct filter unit](#)
- [Filters](#)
- [Ordering key](#)
- [Installation](#)

FKU

Duct-type FKU filters with active coal are used for air filtration and removing unpleasant smells from kitchens, public facilities and industrial plants. They are exclusively designed for installation in ducts with horizontal air flow.

DUCT FILTER UNIT

AIR FILTRATION

DIMENSIONS	Casing dimension B x L x H (mm)	Number of filters	Air flow Q [m ³ /h]
	309 x 309 x 600	4	850
	309 x 614 x 600	8	1600
	614 x 614 x 600	16	3200

ADVANTAGES

- Filter insert replacement is carried out laterally by removing the cover.

MATERIAL AND FINISH

- Casing made out of galvanized steel sheet.
- Filters are cylindrical cartridges sealed to the casing, with supporting expanded steel meshes and neoprene gasket on the connection edge.

APPLICATION

- Air filtration and removing unpleasant smells from kitchens, public facilities, hospitals and industrial plants.

VERSIONS

- Casings made out of stainless steel (AISI 304 or 316L).
- Sheet steel casing powder coated in standard RAL.
- ON REQUEST casing other dimensions, filters with active coal for gasses.



- ▼ [Duct filter unit](#)
- ▼ [Filters](#)
- ▼ [Ordering key](#)
- ▼ [Installation](#)

Filters

Rechargeable active carbon cylindrical cartridges dimensions $\varnothing 140 \times 400$, with supporting expanded steel meshes and neoprene gasket on the connection edge. Filter insert replacement is carried out laterally by removing the cover.

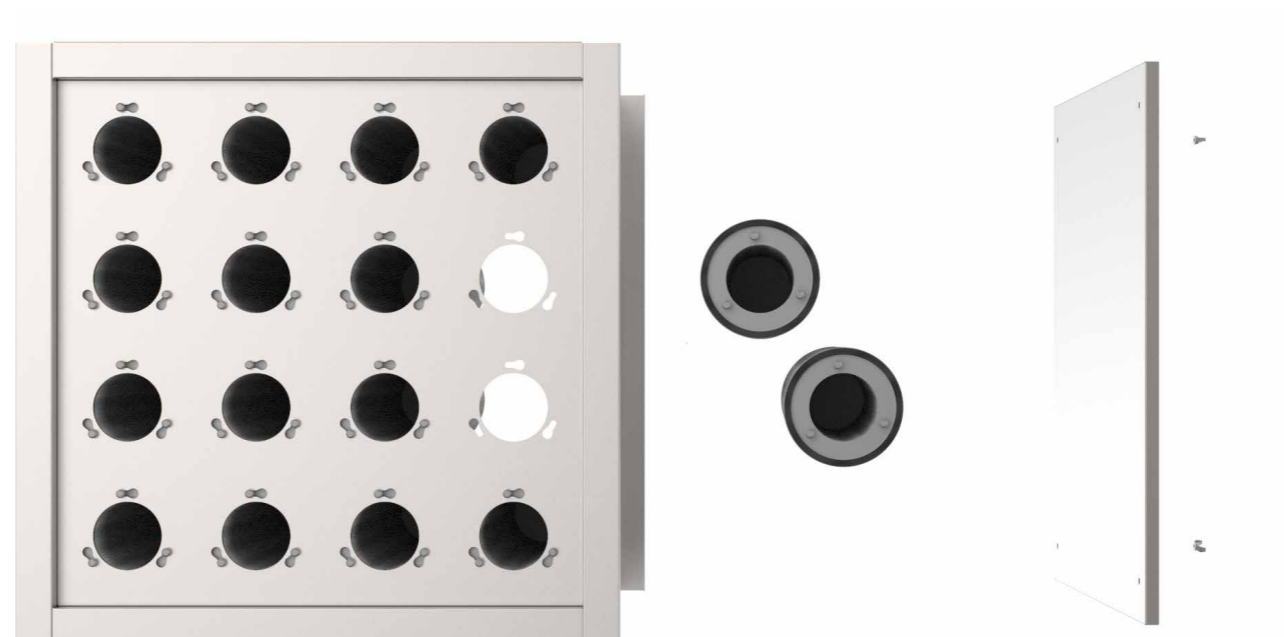
FILTERS

Activated carbon cartridge filter

It is commonly used for the deodorization and the chemical-physical adsorption of gaseous pollutants. The design of a purification system with activated carbon requires the knowledge of the chemical composition of pollutants, the relative concentration and the thermo-hyrometric conditions of the air to be treated.

Maximum temperature: 50 °C (continuous operation)
 Maximum relative humidity: 70%
 Filter media: Micro-granules of mineral activated carbon type CA-1
 Initial pressure drop: 100Pa
 Maximal pressure drop: 500Pa

Standard dimensions FKU comes with configuration with 4,8 or 16 carbon filter cartridges.





- ▼ [Duct filter unit](#)
- ▼ [Filters](#)
- ▼ [Ordering key](#)
- ▼ [Installation](#)

ORDERING KEY

AIR FILTRATION

ORDERING KEY FOR FKU

(1) Duct filter unit	(2) Dimension	(3) Material
FKU	- 309 x 309 x 600	- 316L
(1) Duct filter unit: FKU	(2) Dimensions : 309 x 309 x 600 309 x 614 x 600 614 x 614 x 600	(3) Material: Powdercoated RAL Stainless steel 304 Stainless steel 316L

ORDERING KEY FOR FILTER

(1) Filter type	(2) Dimensions
P-CARB PCE-1R	- ø 140 x 400
(1) Filter type: Carbon filter cartridge *	(2) Filter dimensions: ø 140 x 400

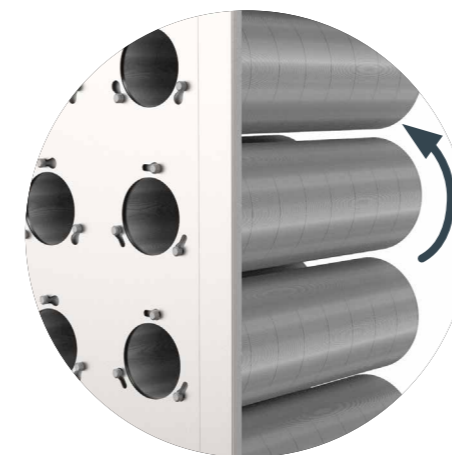
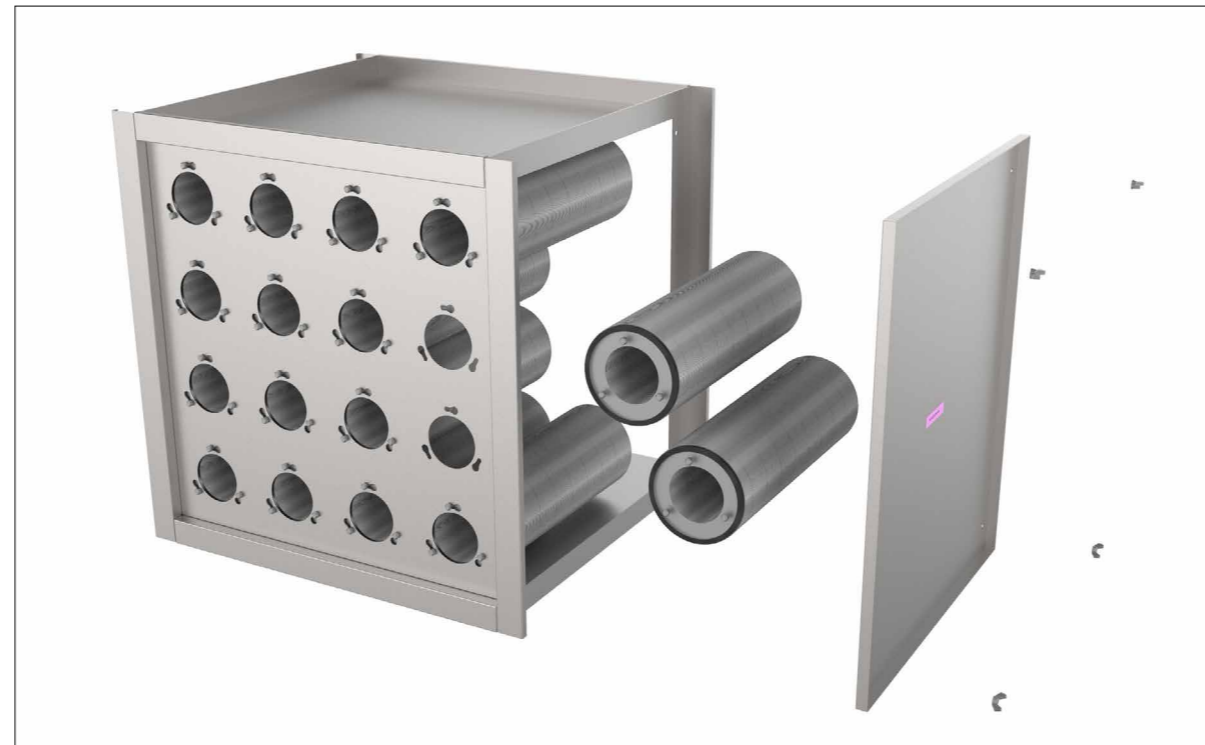
* Number of filters depends on dimensions of FKU, for more details check table on page no. 2.

Installation instructions

Filter change

1. Remove the screws and side cover
2. Rotate each filter in clockwise direction and remove it from the casing.
3. Insert new filters in the mounts and rotate them in counter clockwise direction to tighten them.
4. Re-install the side cover and screws.

NOTE: Prior the installation, supply air ducts has to be disabled and blown out. Air-tight dampers, if there are any, has to be closed also. As a final step of installation, each surface of operation ceiling must be wiped.



- ▼ [Duct filter unit](#)
- ▼ [Filters](#)
- ▼ [Ordering key](#)
- ▼ [Installation](#)

INSTALLATION



AIR FILTRATION

Projektiranje, proizvodnja i održavanje opreme za klimatizaciju, ventilaciju i čiste prostore.
Design, production and service of Ventilation, Air-Conditioning and Cleanroom equipment.

-  Gradna 78A, 10430 Samobor, Croatia
-  +385 (0)1 33 62 513
-  info@klimaoprema.com
-  www.klimaoprema.com