



Product catalog

---

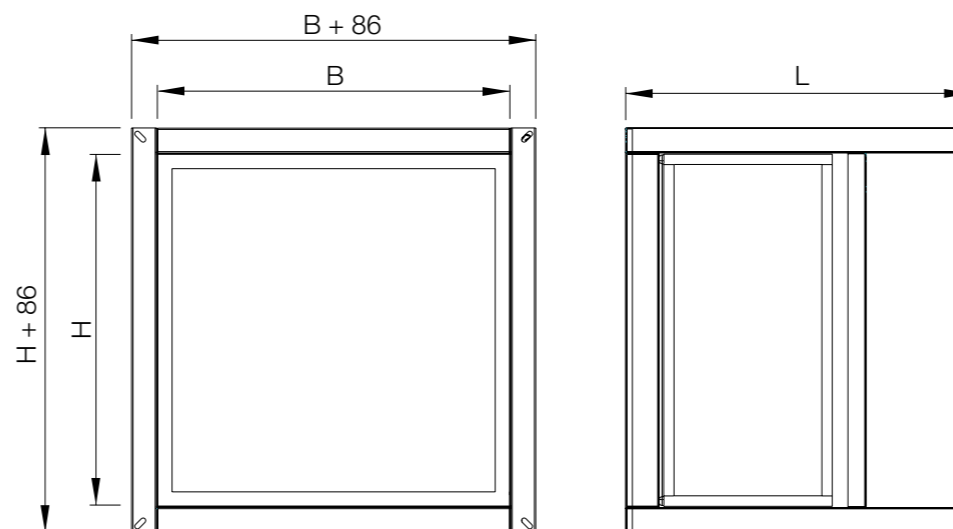
**FAK**

Duct filter unit- Apsolute

---

Air filtration

Version 1.0.0  
Date: 20.01.2025.



- [Duct filter unit](#)
- [Filters](#)
- [Ordering key](#)
- [Installation](#)

## FAK

The absolute duct filter is designed for absolute air filtration in front of the room where a high class of air purity is required, such as hospitals, pharmaceuticals, food and electronics industries. HEPA filter, class H13 or H14 for airborne particles of 0.3µm, efficiency 99.95-99.995% in accordance with UNI standard EN 1822 are used.

## DUCT FILTER UNIT

## AIR FILTRATION

### DIMENSIONS

Casing dimension B x L x H (mm)	HEPA filter dimension (mm)	Air flow Q (m <sup>3</sup> /h)	Pressure drop H13 (Pa)	Pressure drop H14 (Pa)	Pressure drop max (Pa)
309 x 309 x 450	305 x 305 x 68	250	250	280	500
461 x 461 x 450	457 x 457 x 68	570	250	280	500
309 x 614 x 450	305 x 610 x 68	500	250	280	500
614 x 614 x 450	610 x 610 x 68	1000	250	280	500
309 x 309 x 600	305 x 305 x 292	500	250	280	500
461 x 461 x 600	457 x 457 x 292	1140	250	280	500
309 x 614 x 600	305 x 610 x 292	1000	250	280	500
614 x 614 x 600	610 x 610 x 292	2000	250	280	500

### ADVANTAGES

- Easy HEPA filter insertion and replacement.
- Filter saturation control.

### MATERIAL AND FINISH

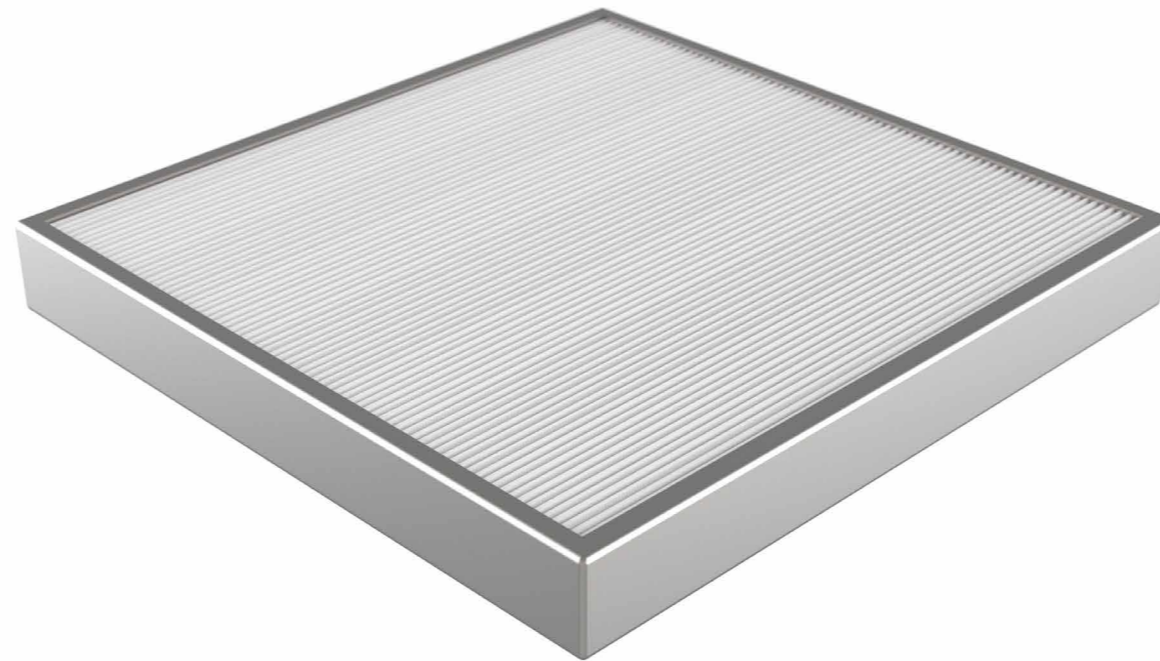
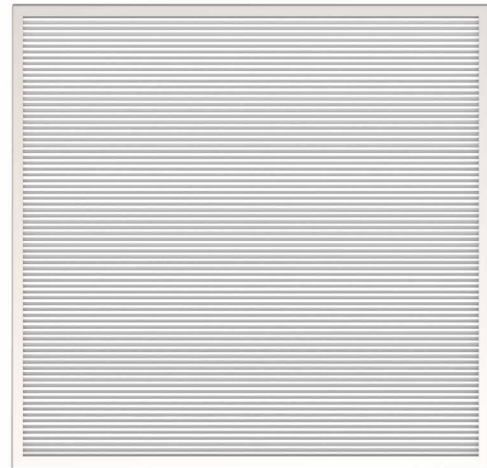
- Casing made out of magnetic steel sheet AISI 430 powder coated in standard RAL 9010.

### APPLICATION

- For areas where absolute air filtration and a high class of air purity are required, such as hospitals, pharmaceuticals, food, electronics industries.

### VERSIONS

- Case made out of stainless steel AISI 304 or 316L.
- ON REQUEST other dimension.



- ▼ [Duct filter unit](#)
- ▼ [Filters](#)
- ▼ [Ordering key](#)
- ▼ [Installation](#)

## Filters

They can be of type LF13, LF14 of the Klimaoprema range. Note that all the filters in our range are filters of standardized sizes with the aim of simplifying maintenance replacement operations and in order not to lock users into a single manufacturer.

**Filters must be ordered separately!**

## FILTERS

## AIR FILTRATION

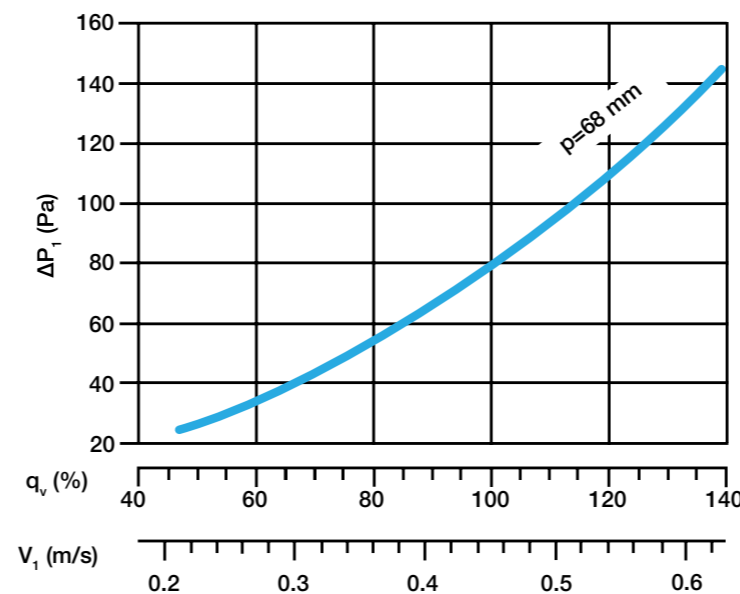
### LF13 and LF14, thickness 68 mm

They consist of a frame in anodized aluminum profile 68 mm thick receiving the filter media (micro-fiber glass paper in mini-plies). A white lacquered metal grid protects the media on both sides during handling. The filters have been tested in accordance with EN 1822 and are effective, as desired:

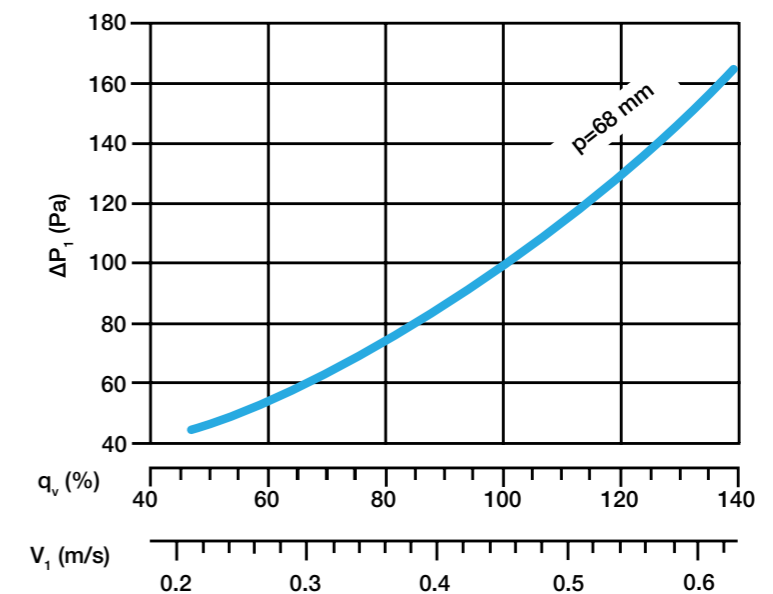
- H13 (≥ 99,95% MPPS)
- H14 (≥ 99,995% MPPS)

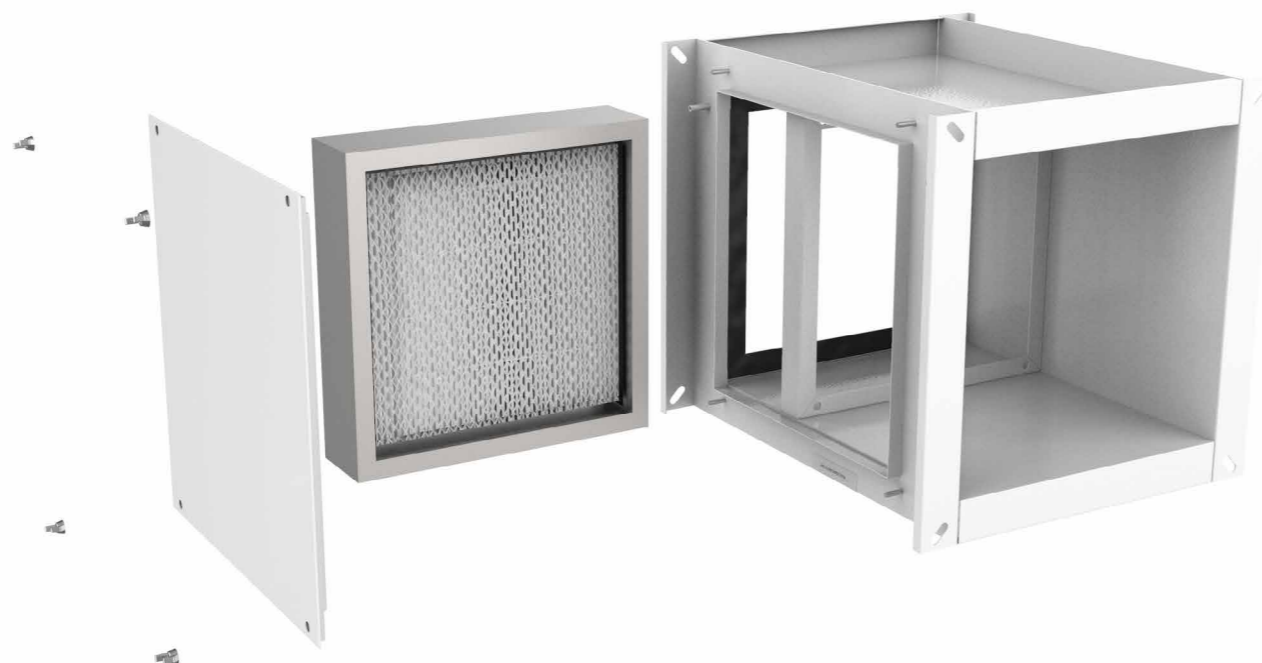
Each filter, delivered in individual plastic packaging, in a rigid cardboard box, is supplied with its individual test certificate according to EN 1822 (MPPS 100% scanning) which must be given to the future user. A polyurethane gasket (continuously cast on the aluminum frame) ensures tightness during the mechanical tightening of the filter on the underside of the self-supporting frame.

H13- initial pressure drop



H14- initial pressure drop





- ▼ [Duct filter unit](#)
- ▼ [Filters](#)
- ▼ [Ordering key](#)
- ▼ [Installation](#)

ORDERING KEY

AIR FILTRATION

**ORDERING KEY FOR FAK**

(1) Duct filter unit	(2) Dimension	(3) Material
<b>FAK</b>	<b>461 x 461 x 450</b>	<b>RAL</b>
(1) Duct filter unit: <b>FAK</b>	(2) Dimensions: 309 x 309 x 450 461 x 461 x 450 309 x 614 x 450 614 x 614 x 450 309 x 309 x 600 461 x 461 x 600 309 x 614 x 600 614 x 614 x 600	(3) Material: Powdercoated <b>RAL</b> Stainless steel <b>304</b> Stainless steel <b>316L</b>

**ORDERING KEY FOR FILTER**

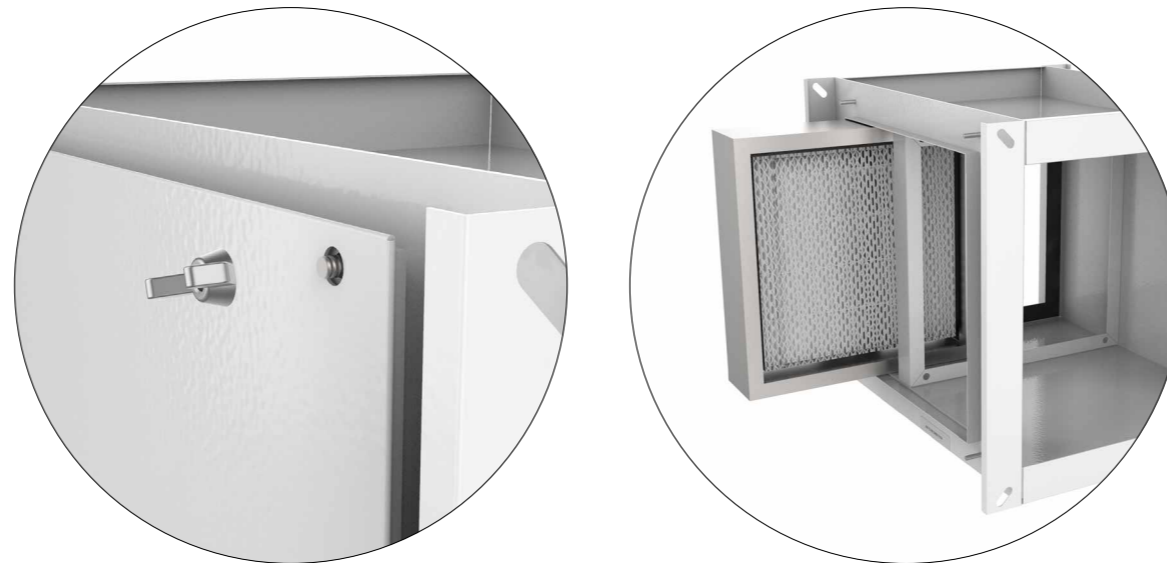
(1) HEPA filter type	(2) Dimensions
<b>LF14</b>	<b>457 x 457 x 68</b>
(1) Hepa filter type: <b>LF13, LF14</b>	(2) Filter dimensions: 305 x 305 x 68 457 x 457 x 68 305 x 610 x 68 610 x 610 x 68 305 x 305 x 292 457 x 457 x 292 305 x 610 x 292 610 x 610 x 292

## Installation instructions

### Filter change

1. Remove the screws and side cover.
2. Slide the old filter out of the casing.
3. Insert new filter.
4. Re-install the side cover and screws.

**NOTE:** Prior the installation, supply air ducts has to be disabled and blown out. Air-tight dampers, if there are any, has to be closed also. As a final step of installation, each surface of operation ceiling must be wiped.



- ▼ [Duct filter unit](#)
- ▼ [Filters](#)
- ▼ [Ordering key](#)
- ▼ [Installation](#)

INSTALLATION



## AIR FILTRATION

---

Projektiranje, proizvodnja i održavanje opreme za klimatizaciju, ventilaciju i čiste prostore.  
Design, production and service of Ventilation, Air-Conditioning and Cleanroom equipment.

---

-  Gradna 78A, 10430 Samobor, Croatia
-  +385 (0)1 33 62 513
-  [info@klimaoprema.com](mailto:info@klimaoprema.com)
-  [www.klimaoprema.com](http://www.klimaoprema.com)